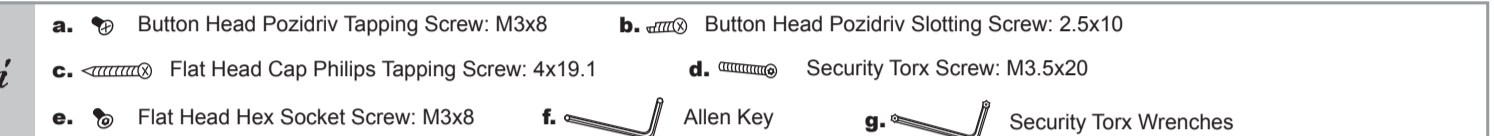
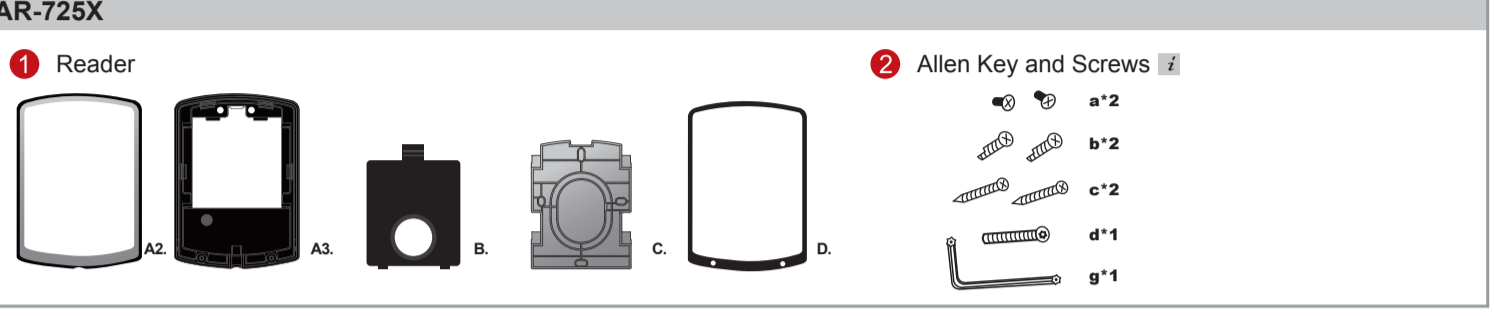
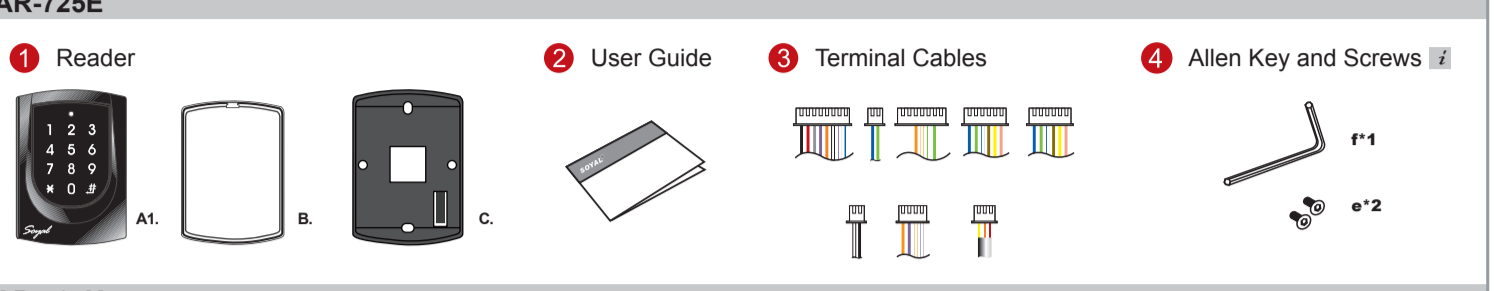
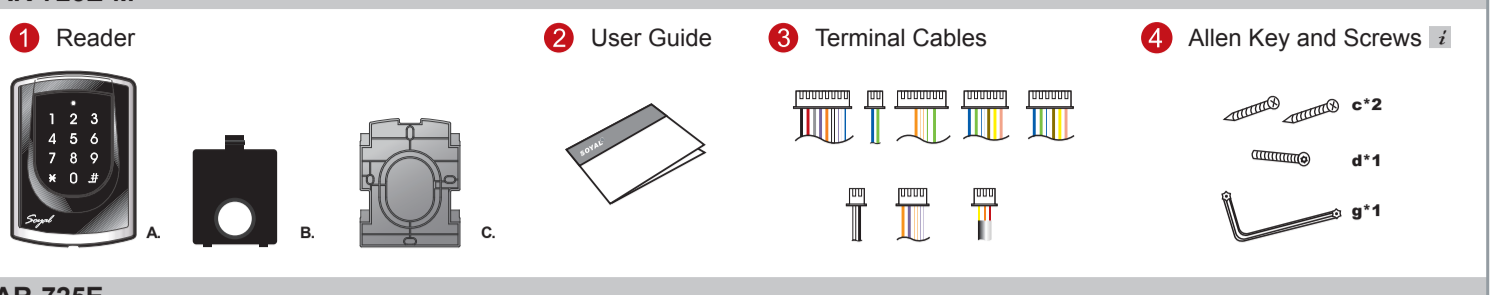
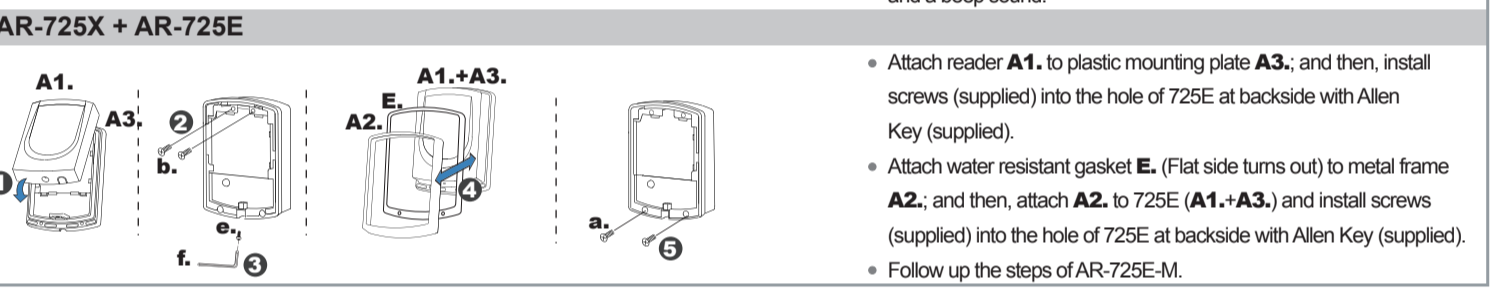
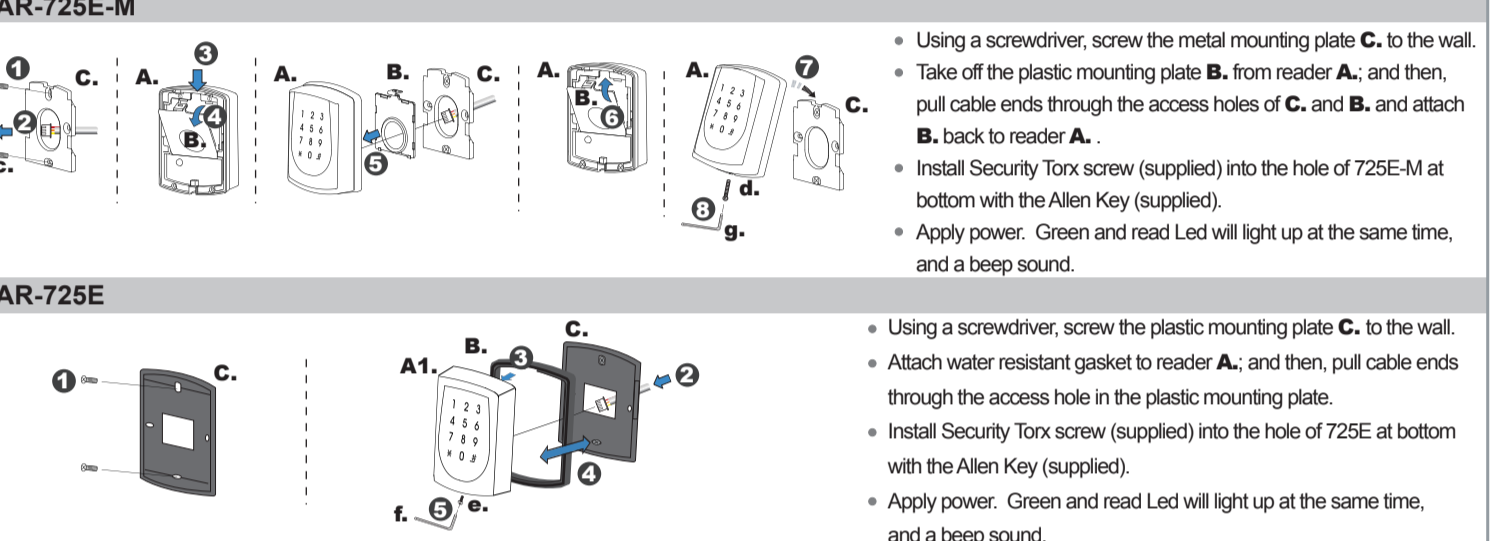


Contents AR-725E-M



Installation AR-725E-M



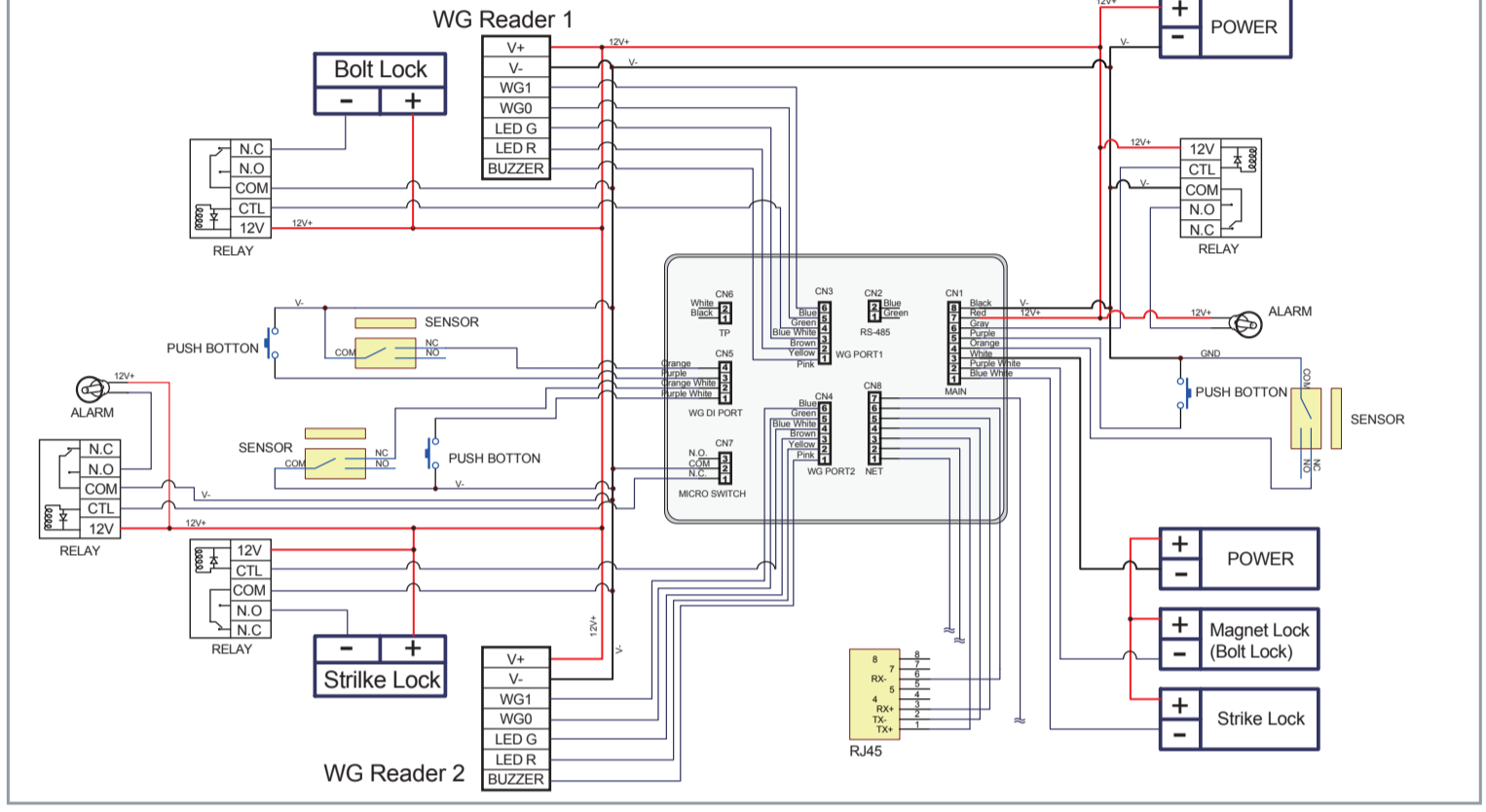
Notices

- 1. Tubing: The communication wires and power line should not be housed in the same electrical conduit or tubing.
2. Cable selection: Use AWG 22-24 "Shielded Twisted Pair" and avoid star wiring.
3. Power supply: Do not connect the reader and lock to the same power supply.

Connector Table

Connector Table with 7 sub-tables (CN1 to CN7) listing wire applications, colors, and descriptions for various components like Door Relay, Alarm Output, Power, etc.

System Connection



Command List

Command List table with columns: Function, Command, Exposition, Control Mode. Lists various commands like 'Enabling programming mode', 'Master code setting', etc.

Function

Function table listing various functions (e.g., Enabling all units into arming status, Door close time, Factory setting-1) and their corresponding commands and control modes.

Function Default Value

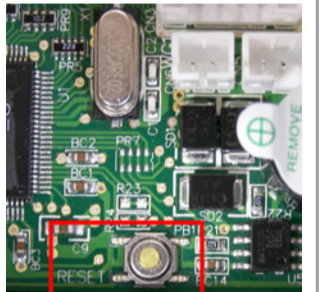
Function Default Value table showing default values for various functions like '20 \* U \* NNN #', '24 \* U \* DDD #', etc.

Programming

Programming table with columns: Entering, Command, Exiting. Shows the sequence for entering and exiting programming mode.

B. Initial Setup

- 1. Restoring Factory Settings
2. Changing the Master Code
3. Changing the Node ID of Reader

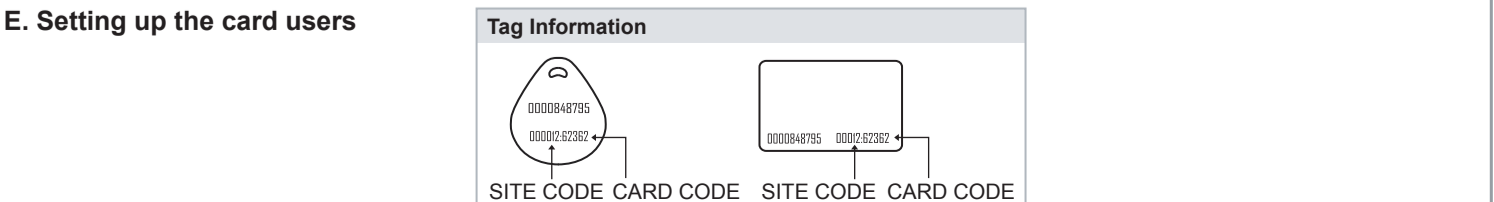


C. Setting up the control mode (M4/M6/M8)

Control Mode settings table with columns: Application, Mode 4, Mode 6, Mode 8. Details connection types, user capacity, and access modes.

D. Setting up the password

- 1. Individual PWD (M4/M8)
2. Public PWD (M6)
3. Card and PIN



1. Adding and Deleting Tag (M4/M8)

Adding and Deleting Tag (M4/M8) table detailing RF Learn Function, Sequential Tag NO., and Random Tag NO. processes.

2. Adding and Deleting Tag (M6)

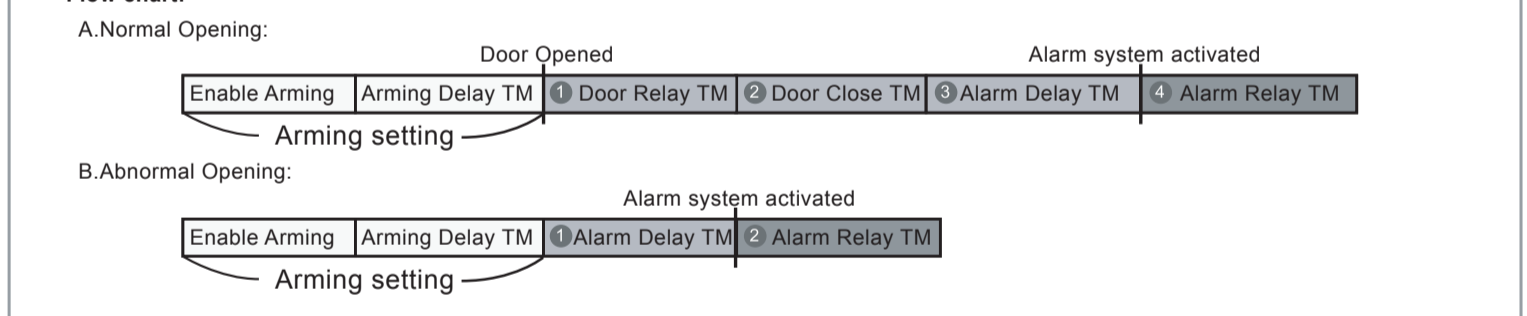
Adding and Deleting Tag (M6) table detailing Single Tag, A Batch of Tags, and Delete All Tags procedures.

F. Setting up the alarm

- 1. Settings: Arming status enabled, Alarm system connected.
2. How to enable/disable the arming status?
By Keyboard, By flashing card + Arming PWD

2. Application:

- Door opened too long (After Normal Opening): Door opened over the time of door relay time and door close time.
Door sensor error: Door sensor is open loop.
Force open (Opened without a valid user card being shown): Access by force open and illegal procedure.



Function Command Description table listing parameters like Door Relay TM, Door Close TM, Alarm Relay TM, and Arming Delay TM with their settings and descriptions.

G. Anti-pass-back

- 1. Device enable
2. Card user enable
3. Setting up open time

H. Auto Open Zone

- 1. Enable/Disable auto open zone
2. Card user enable
3. Setting up open time

I. Lift control

- 1. Device Enable
2. Card user enable

2. Single floor

- Access programming mode \*123456# or \*Master Code#
Access programming mode \*123456# or \*Master Code#
Access programming mode \*123456# or \*Master Code#

725E IP Setting section with Step 1: Turn on your Web Browser and input factory default IP address: http://192.168.1.127. Includes screenshots of the web interface.

Step 5: STATUS section showing online status monitoring and Step 6: Change the log-in password to lock the IP setting of Ethernet Module. Includes screenshots of the web interface.

Appendix-Firmware Upgrade

- Get the upgrade software from SOYAL or our distributor and run "UdpUpdater" software.
A. Execute the software
B. Boot loader update
C. Update the firmware